

THE KAADADJAN CENTRE CAMPING RULES AND SAFETY INFORMATION

Please take the time to read, understand and adhere to these rules to ensure that everyone enjoys their stay:

ABOUT THE KAADADJAN CENTRE

The Kaadadjan Centre is a sprawling 100-acre property in the Darling Range just outside the Dwellingup township. Bound by native forests and open spaces, the Murray River winds around the western boundary of the property, its frontage dotted with rock formations, shady trees and bright foliage. The Bibbulmun Track and Munda Biddi Trails are among our neighbours and Dwellingup's town centre, tourist attractions and the region's popular, mountain biking trails are all just minutes away.

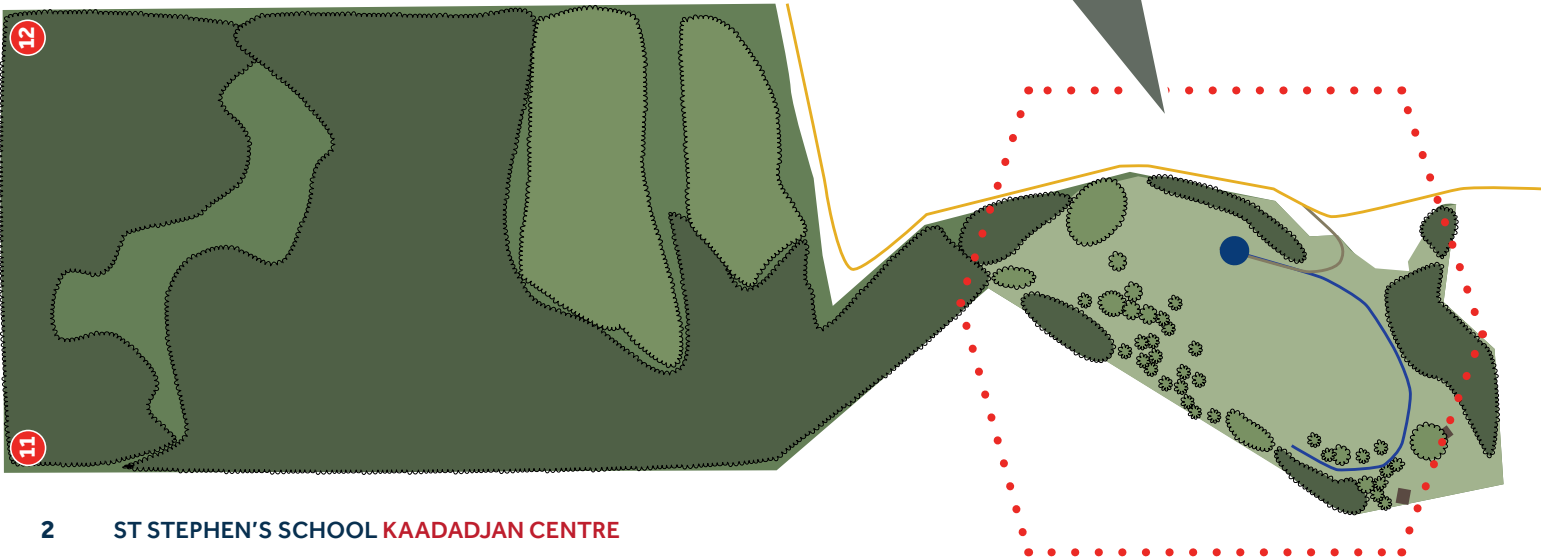
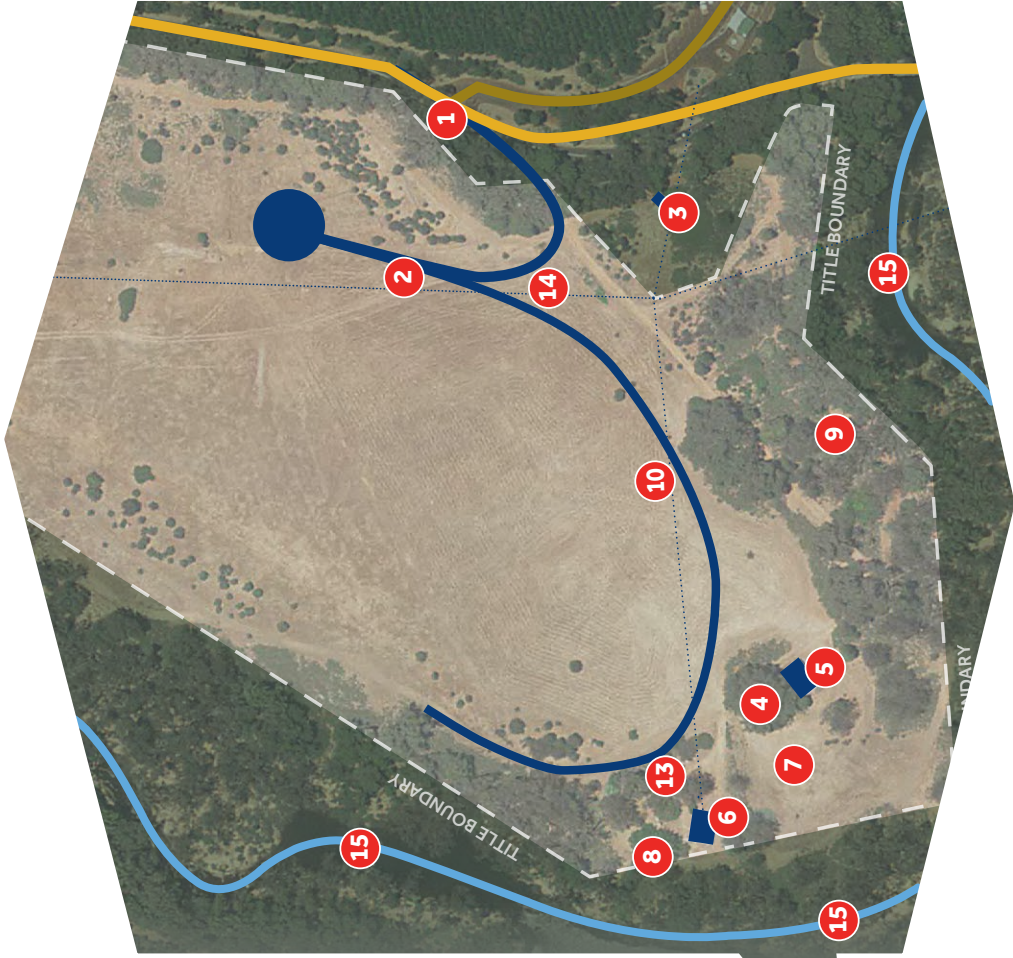


St Stephen's School
SERVE GOD SERVE ONE ANOTHER

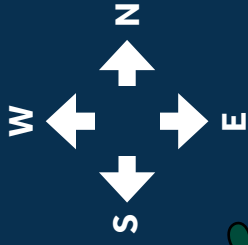


KAADADJAN CENTRE SITE MAP

- 1 Main entry off Nanga Road
- 2 Existing road and turning circle
- 3 Old Dairy
- 4 Marri Tree
- 5 Shed
- 6 Cottage
- 7 Firepits and river access
- 8 Historic Oak tree
- 9 Old Orchard
- 10 Campsites A-N (see on page 3)
- 11 Maintained firebreak
- 12 Access to Bibbulmun Trail and Munda Biddi Track
- 13 Toilets
- 14 Emergency Assembly Area
- 15 River



CAMP SITES



CAMPING RULES

Every care is taken to ensure The Kaadadjan Centre is as safe as possible.

We ask that you help us to preserve the river, flora and fauna by keeping to the paths, roadways and campsites. Only camp within the boundaries of the 'camp ground' as per the map on Page 3.

Guests must self-cater, self-clean and leave the campsite as you found it.

The Kaadadjan Centre is a bush campsite with no running water or shower facilities and limited mobile coverage. The campsite has two composting toilets available.

Most of the site is undeveloped and consequently there are risks to be managed that all guests need to be aware of.

To make your stay safe, pleasant and enjoyable please observe the following:

- Access Gate** Please keep the access gate to the property locked at all times.
- Bookings** Guests must advise the total number of people attending The Kaadadjan Centre when booking.
- Campfires** Open fires are prohibited unless in a proper fire receptacle off the ground. It is guest's responsibility to be aware of the Shire of Murray requirements and current bushfire restrictions.
- Camp Sites** There are 16 large unpowered campsites, generous in size to offer privacy for you and neighbouring guests. Please be aware that campsites will be allocated during 'peak' booking times such as Easter and July/October school holidays. The remaining times campsites are assigned on a first come, first served basis.
- Caretaker** Our caretaker is not located on site. If you have any concerns please contact Property Services.
- Dogs** Dogs are welcome at The Kaadadjan Centre. Please follow these simple rules to help make your visit enjoyable for you, your dog, other visitors and the local wildlife.
- Keep your dog on a leash and under control at all times.
 - Always clean up after your dog. Collect waste in a secure bag and dispose of it using your own bags and take them with you when you leave.
 - Always check your dog for ticks.
- Drinking Water** All guests are required to provide their own drinking water. The tank water, river water and hand basin water is not treated and unsuitable for drinking. Potable water signage are installed in the toilet block.

Fire Danger Ratings	In accordance with the School's Bushfire Plan, the Kaadadjan Centre will be closed in the event of a Very High, Severe, Extreme or Catastrophic Fire Danger Rating. Bookings made during this period will be cancelled. Guests already on the property must leave immediately. It is essential that guests keep up to date with bushfire warnings during the fire season. The School may pre-emptively close the grounds at any time should it have concerns regarding fire safety.
Fire Extinguishers	Fire Extinguishers are located as per the site plan on the sides of the cottage, shed and in the toilet block. We strongly encourage campers to bring their own due to distances involved.
Firewood	Guests must bring their own firewood. Do not cut or damage any trees, dead or alive.
Fire Works	Fireworks or other explosive devices are not permitted.
Grey Water	All guests are required to take their grey water with them when they leave.
Keys	Keys must be handed in to Property Services within two days of returning from The Kaadadjan Centre.
Kitchen	No kitchen / dishwashing facilities are available.
Lighting	There is no lighting on the property and guests are required to make provision for their own lighting.
Mobile Coverage	There is full coverage for guests with Telstra but limited mobile coverage for guests with other service providers.
Noise	For the comfort of all guests no loud noise is permitted after 10pm – 7am.
Power Supply	Power supply is limited and is located on the outside of The Cottage.
Rubbish	All guests are required to take their rubbish with them when they leave.
Showers	There are no showers available on the property. Showers are available at the Dwellingup Visitors Information Centre.
Smoking	No smoking or vaping is allowed.
Speed Limit and Vehicle Operation	At all times, a strict speed limit of 8km/hour. To preserve the natural state and beauty of the property, vehicles must follow the markers on the Site Map (page 3 of this booklet) to gain access to their campsites and remain on established tracks. You are not permitted to drive across the paddock.

Toilets

There are two composting toilets on the property. Instructions on how to use the toilets are located in each cubicle. Please adhere to the 'do's and don'ts when using the toilets as correct use of the toilets is crucial to ensure the health, proper operation and odour prevention in the toilet block. Please remember to bring toilet paper and keep the area clean.

Guests who have sealed toilet facilities available in their caravans / campers are encouraged to use them (chemical or 'portaloo') and remove waste from the site. You are not permitted to empty portable toilet cassettes into the composting toilets. A dump point is located in Dwellingup near the Visitors Centre.

Guests can hire portable toilets from Kennards
www.kennards.com.au/site-equipment/showers-toilets.html.

Surcharges apply.

SAFETY INFORMATION

Barbed Wire

There is a quantity of barbed wire on the site. All efforts have been made to clear the debris, however there are still remnants on the site.

If found, it is to be reported to Property Services.

Camp Fire Safety

An open campfire is part of camping. A campfire can easily cause a bushfire if you do not build or extinguish it correctly.

Follow the simple tips below:

Before you light a fire:

- Check if a campfire is allowed. If a Total Fire Ban (TFB) or local fire restrictions are in place it is illegal to do anything that could start a fire, which include lighting a campfire. Please follow this link to check a TFB - <https://www.emergency.wa.gov.au/>
- Check the Fire Danger Rating (FDR) for the area you are camping in. Campfires cannot be lit if the FDR is Very High, Severe, Extreme or Catastrophic. Please follow this link to check the FDR - <https://www.emergency.wa.gov.au/>
- Check the conditions around you. If the weather is hot, dry and windy, it is unsafe to light a campfire.

Building a safe campfire:

- Clear any branches, leaves or twigs at least 3 metres around or above the campfire.
- Build your campfire at least 3 metres away from tents, camping equipment and any flammable items like gas cylinders and fuel cans.
- To prevent hot embers from flying out, please use the half drum fire pits provided by the school.
- Never use flammable liquids on a fire, even when you are trying to get it started.

Looking after your campfire:

- Don't overdo it. Your fire only needs to be big enough for cooking and keeping warm.
- Never leave your fire unattended, not even for a minute.
- Put your fire out properly with water not soil, even if going for a short walk or swim.
- Never leave kids and pets unsupervised near a fire.
- Always keep a bucket of water nearby.

Putting your campfire out:

- Use water to completely extinguish your fire before you leave the campsite.
- Don't bury the fire to put it out, as fires can stay hot for more than eight hours.
- Always extinguish your fire before you go to sleep to avoid coal or ember burns.

Basic campfire safety:

- Do not burn dangerous or flammable items, such as aerosol cans, as they can explode.

Contractors

There may be contractors working on the site. Where possible, the School will notify guests at the time of the booking. Please make contractors aware of your presence. Guests do not have the authority to direct contractors or make request for them to leave the site. If you have any issues or concerns contact Property Services.

Disability Access

Disability access is limited to roadways only.

Falling Branches

Trees are not inspected for their safety and sturdiness. Do not pitch tents under any trees. All trees must be treated with caution as to their safety.

Fauna, Flora & Dieback

Kangaroos, reptiles and birds frequent the camp and campsite. Wear appropriate insect repellent to protect against flies, mosquitoes, ticks and spiders. Ensure bites are treated as soon as possible. Areas where lilies are present should be avoided at all times, although beautiful, lilies are toxic. To limit the spread of Dieback within the Dwellingup area, please observe the following:

- Don't spread soil or mud around bushland, in particular during Spring and Autumn.
- Stick to tracks and paths when bushwalking, cycling, horse riding or using off-road vehicles.
- Observe signage in the local bushland reserve and stay out of quarantined areas in bushland and forested areas across the South-West.

- First Aid** All guests must supply their own first aid kit, including a snake bite kit. The Kaadadjan Centre is not staffed and the closest medical facility is in the Murray District Hospital in Pinjarra.
- Pests and Vermin** Please be cautious when walking across the camp as you may encounter wild pigs, snakes, rabbit burrows, bull ants nests and foxes (at night).
Take care to keep clear of current pig runs and stay out of thick undergrowth and blackberry bushes, as pigs and snakes may dwell there.
- The Cottage** Prior permission must be obtained to access the cottage on site.
- Unexploded Explosive Devices** Due to the army reserve activity in the area in the 1920s, there is a very low but possible risk of coming across unexploded explosive devices. If any unidentified metal objects are discovered or disturbed then the following procedure should be followed:
1. Immediately evacuate the area of the object to a minimum of 10m.
 2. Close off the area with bunting to indicate that it must not be accessed until an investigation of the object can be conducted.
 3. Contact Property Services on (08) 9243 2431 so that a thorough investigation can be arranged.
 4. The area must remain bunted until the all clear is given by Property Services.

**If you have any feedback, please let
Property Services know.
propertyservices@ststephens.wa.edu.au**

BOOKINGS AND HELPFUL CONTACTS

Bookings can be made by contacting the School's Property Services Team on 08 9243 2431. Keys can be collected from Property Services at Duncraig or Carramar once a booking is confirmed. A \$50 key deposit will be required and guests will be requested to sign a waiver and release upon collection of The Kaadadjan Centre keys.

Emergency services (Fire, Police, Ambulance)	000
Dwellingup Police Station	9538 1057
Dwellingup Volunteer Bushfire Brigade	9538 1806
Health Direct	1800 022 222
Kids Helpline	1800 551 800
Murray District Hospital, McKay Street, Pinjarra	9531 7222
Peel Health Campus (Hospital, Mandurah)	9531 8000
Shire of Murray	9531 7777
State Emergency Services (SES)	13 25 00
Water Corporation WA	13 13 75
Western Power	13 13 51
St Stephen's School	9243 2100
Kaadadjan Centre Caretaker	0439 920 333

BOOKINGS AND FEES

Due to the regular occurrence of Very High, Severe, Extreme and Catastrophic Fire Danger Ratings during the summer, the Kaadadjan Centre will be closed from the 10th of December until the end of February. Therefore, bookings are only open from the 1st of March until the 9th of December. We thank you for co-operation and understanding.

Click [here](#) to book and to read the Term & Conditions.

Fees are charged to offset property maintenance costs as follows:

Adults (16+) - \$15 per person per night

Children (ages 6 - 15) - \$5 per person per night

Children (ages 0 - 5) free

After submitting the booking form, the Property Services Coordinator will be in touch to make further arrangements such as confirmation of booking, picking up of keys and payment. Keys will not be handed out without proof of payment.

For any further queries about The Kaadadjan Centre contact kaadadjancentre@ststephens.wa.edu.au.



St Stephen's School

SERVE GOD SERVE ONE ANOTHER